



BushNET Tool

Commissioning, Diagnostics & Configuration Utility for BushNET Ethernet Switch

FEATURES

Graphical 26-port management

Serial console terminal (colour)

SNMP v3 monitoring

VLAN editor CRUD

NETCONF

Port configuration VLAN
assignment

802.1X monitoring

ACL (Access Control List) editor

Spanning Tree Protocol
configuration

Configuration backup, restore

Configuration diff tool

Configuration templates for
deployments

Firmware update utility for IOS XE
image management

Syslog real-time system event
monitoring

Session recording and playback for
audit and training

Quick command palette

Credential management with
auto-login support

Built in iperf3 benchmarking



MADE IN AUSTRALIA

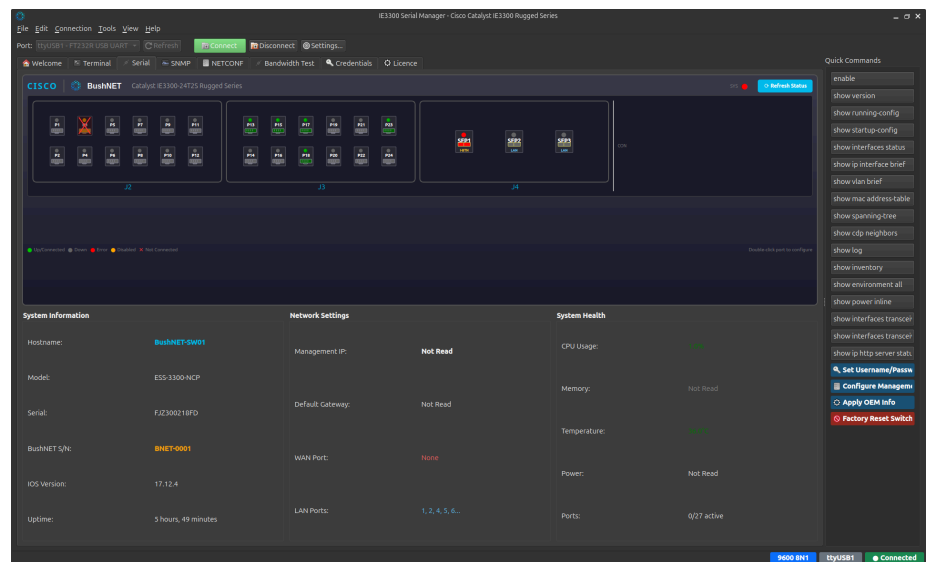
BushNET Tool is a desktop application designed for integrators, developers and field service engineers to commission, test and diagnose the Astute Systems BushNET 26-port rugged ethernet switch for land vehicle applications. It provides an intuitive graphical interface for serial console access, SNMP monitoring, port configuration and firmware management — reducing commissioning time and enabling rapid fault diagnosis in the field.

Built on Qt6 with a native C++ core, BushNET Tool delivers a responsive, cross-platform experience on Linux workstations. The graphical switch panel provides a real-time visual representation of all 26 ports across three physical connectors (J2, J3, J4),

displaying link status, VLAN assignment, traffic statistics at a glance.

The integrated SNMP monitoring dashboard provides real-time charts for CPU utilisation, memory consumption and per-port bandwidth, enabling engineers to identify performance bottlenecks and network anomalies without leaving the application. Configuration templates allow standardised switch setups to be applied consistently across vehicle platforms, while the config diff tool highlights changes between running and startup configurations.

BushNET Tool is distributed as a self-contained Linux Appliance — no installation required. Simply copy to a USB drive or field laptop and run.



COMMISSION DIAGNOSE CONFIGURE



FIND OUT MORE

Defence-grade networking tools for the tactical edge

Astute Systems delivers rugged computing and networking solutions for defence and industrial applications. Our products are designed for harsh environments where reliability, performance and security are mission-critical.

SPECIFICATIONS

SERIAL INTERFACE

Console Port: D-Type 9 pin

Default Baud Rate: 9,600 bps

Auto-detection: 1,200 – 115,200 bps

Terminal Emulation: Built-in VT100

Session Logging: Timestamped with export

SWITCH PORTS (BUSHNET)

J2: 11x 1G Copper RJ-45

J2: RS232 Management

J3: 12x 1G Copper RJ-45

J4: 3x 1G/10G Fibre SFP+

Total: 26 ports (24 copper + 3 fibre)

SYSTEM REQUIREMENTS

OS: Linux .deb .rpm .ApplImage

RS232: Serial x 1

Network: Ethernet (for SNMP / NETCONF management)

SNMP / NETCONF CONFIGURATION

Versions: SNMPv3

NETCONF setup VLAN and Multicast Management

Community Strings: Configurable read/write

Walk & Get: Full MIB tree browsing

Bulk Operations: Multi-OID queries

Trap Receiver: Real-time event monitoring

MONITORED METRICS

Port Status: Link / Speed / Duplex

Traffic: Rx/Tx bytes and packets

Traffic: Rx/Tx bytes and packets

Temperature: Switch internal sensors

CPU / Memory: Utilisation percentage

PROTOCOLS & STANDARDS

SNMP v3

NETCONF

IEEE 802.1Q (VLANs)

IEEE 802.1X (Port Authentication)

IEEE 802.1D (Spanning Tree)

RADIUS Authentication

ACL (Standard & Extended)

iperf3 client for Benchmarking (Requires server)



ASTUTE SYSTEMS

Specifications subject to change without notice. BushNET is a trademark of Astute Systems.

CONTACT YOUR LOCAL REPRESENTATIVE

FOR MORE INFORMATION ON HOW WE CAN ADAPT OUR SOLUTIONS TO MEET YOUR IO REQUIREMENTS

Australia: +61 0(7) 3555 5560 Email: sales@astutesys.com

astutesys.com